

# Coantec X5 series

## High Performance Multifunctional Industrial Videoscope



**Redefining the all-in-one handheld industrial videoscope !**

- Original electric control tube replacement technology
- Electric handheld integrated design
- IPS full lamination HD touch screen
- Different focal length lenses can be replaced
- More storage space
- Dual engine power supply, long endurance
- Powerful function, simple interface
- Strong and durable, resistant to fall and wear
- High quality lossless image quality
- 3D measurement function (premium version)

# X5

## Actual inspection picture for turbine



### 1. Brief Introduction

X5 series high-performance multi-purpose industrial videoscope is a visual inspection equipment used to observe the internal surface condition of equipment or components. It uses excellent image sensing technology to comprehensively improve the definition of the image, presenting more vivid colors, more detailed high-definition images. New modular design allows quick replacement for touch screen and insertion tube. Unique dual engine power supply mode, battery life can be up to 8 hours. With powerful software functions, it can adapt to different inspection scenarios and effectively improve the efficiency of inspection. This instrument can be used in aviation, aerospace, automobile, railway, ship, energy, petrochemical, electric power, military, special inspection and other fields.



**WERTHEIM**  
SOLUTIONS





## 2. Powerful Performance

### High quality lossless image quality

Built-in image sensor with high sensitivity and high performance image algorithm, the image quality is more clear and exquisite, the image is smooth and real, and the details are better presented, which is convenient to observe various subtle defects inside the equipment or interior of parts.



### IPS full lamination HD touch screen

Brand new IPS full lamination HD touch screen, connected to the host by blade connectors. Stable and reliable, easy to replace. The standard X5 series features a 6-inch touchscreen, while the X5 Pro series features a 7-inch touchscreen.



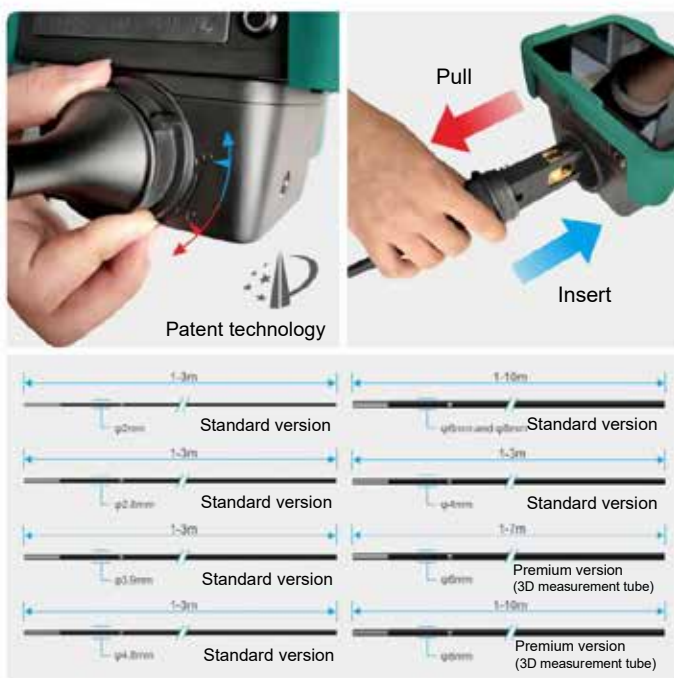
### Electric handheld integrated design

Ergonomic handheld design, more comfortable to hold. 360° all-way articulating electric control joystick, responsive without delay, with a good control experience.



### Original electric-control probe replacement technology

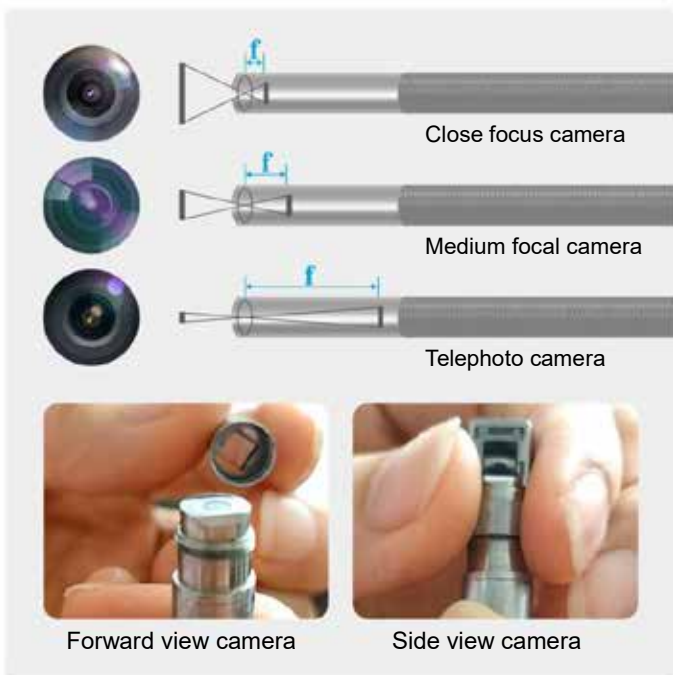
The host can be configured with different lengths, diameters, lighting mode of the insert tube, users can save the use cost to a greater extent. The insertion tube is connected with the host by buckle and interference fit (original patent), which makes disassembly and assembly more convenient and fast.



## 2. Powerful Performance

### Different focal length lenses can be replaced

Unique double thread connection structure design, single tube can be used with direct view/side view, macro, near focus, wide angle, medium focus, telephoto lens of different specifications, It is suitable for detecting targets of different distances and presents clearer images.



### New 3D measurement function

X5 Pro series 7-inch premium version is equipped with 3D measuring system, which can accurately measure the distance from point to point, point to line, point to surface, length of multi-line segment, area, etc., with measuring accuracy of 0.01mm and error  $\leq 5\%$ .



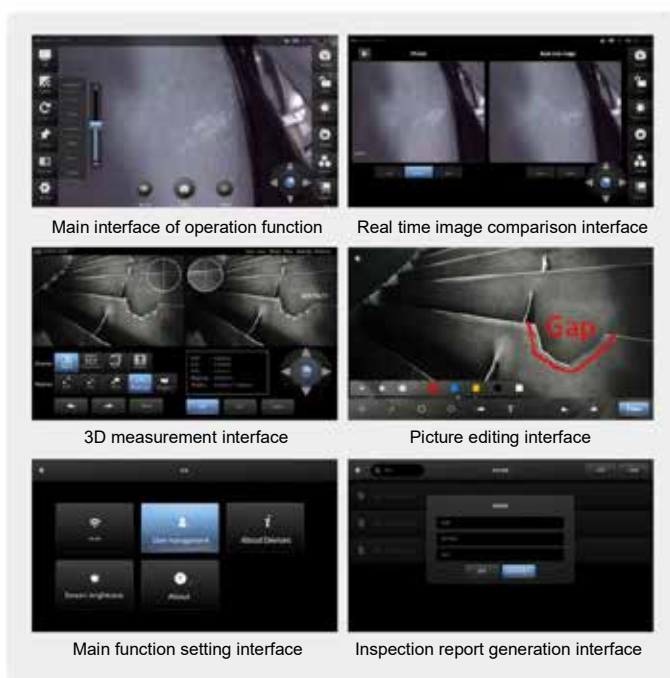
### More storage space

The host has built-in 16G large capacity storage space by default (which can be expanded to 32G/64G/128G). It is equipped with two USB ports for external USB disk, which can be used to access data and upgrade software more conveniently and quickly.



### Powerful function, simple interface

Simple new UI interface, can realize photography, video, virtual rocker operation, speed and slow adjustment, brightness adjustment, file management, real-time comparison, report generation, wireless connection, LAN and Internet push flow and other functions, user-friendly design, simple and easy to operate.



## 2. Powerful Performance

### Dual engine power supply, long endurance

The original dual-engine power supply mode is adopted, and rechargeable large-capacity lithium polymer battery is built into the handle and display screen, which can be used for more than 8-10 hours to achieve ultra-long battery life. Fast battery charging technology, with higher charging efficiency, charging half an hour, can work for a day.



### Strong and durable, resistant to fall and wear

The shell of the host is made of more abrasion resistant and scratch resistant ABS+PC material, and the display screen is equipped with anti-fall silica gel to make it more durable. Equipped with high performance professional instrument case, convenient storage, easy to travel with.



## 3. Specification

<ul style="list-style-type: none"> <li>● standard configuration</li> <li>○ optional configuration or accessory</li> <li>-none of the configuration or accessory</li> </ul>	X5 (Standard version)	X5 pro (Premium version, 3D measurement)
Display	Brand new IPS full lamination HD touch screen	
Display size	6-inch	7-inch
Display resolution	1280*720	1920*1200
Display detachable	●	●
<b>Host system</b>		
User interface	Use the touch screen, physical buttons, and joystick menus to navigate	
Host storage capacity	16G	128G
Storage memory expandable	○	-
Host running memory	The standard running memory is 2GB and can be expanded to 4GB	
Photography function	●	●
Image format	JPG	
Video recording function	●	●
Video format	MP4	
Real-time image zoom	1-5 times (multi-touch pinch gestures for zooming is supported)	
LED brightness adjustable	0-9 level	



Image color adjustment	Adjust image brightness, contrast, hue, saturation, sharpness, gamma, and restore default	
Display brightness manual adjustment	●	●
Display brightness automatic adjustment	○	●
Video resolution	640*360,640*480,1280*720 optional ( based on the actual parameter of the camera )	
Image mode	Default, monochrome, negative, bright, highlighted, or soft.	
Image rotation	●	●
Image freezing	●	●
Scenario	metal or non-metal	
Image real-time comparison	●	●
Time watermark	●	●
Spot watermark	●	●
Virtual joystick	●	●
Report generation	●	●
Ruler	none,circular ruler ,cross ruler,or reference line	
Bluetooth data transmission	●	●
WiFi data transmission	●	●
Audio input and output	●	●
Battery power monitoring (shutdown state)	●	●
File operations	Full screen view/image magnification/delete/rename/rotate/graffiti etc	
Image Zoom	1-5 times ( multi-touch pinch gestures for zooming is supported )	
File edit	Text annotation and graffiti functions (handwritten lines, arrows, boxes, round signs, text annotation, and can set the brush color and thickness)	
User permission management	Administrator, Visitors, Standard user (created by administrator)	
Menu language	Simplified Chinese, English	
Input method	5 language input methods: Chinese, Russian, English, German and French	
Software package of 3D measurement system	○	Point to point, point to line, point to surface, area measurement, multi-line segment measurement, 3D measurement accuracy 0.01mm, measurement error ≤5%
Host IP55 waterproof	●	●
<b>Output port</b>		
HDMI Video Output Port	●	●
3.5mm audio port	●	●
USB 3.0 port	2	
Type C port	●	●
<b>Dimensions</b>		
Host size	326mm*185mm*118mm	350mm*197mm*126mm
Package size	551mm*351mm*240mm	551mm*351mm*240mm
Host weight(including battery )	2kg	2.1kg
<b>Insertion tube</b>		
Tube diameter (±0.1mm)	2mm	Tube length:1m~3m available ( The measurement function is only available for tubes larger than 4mm )
	2.8mm	
	3.9mm	
	4.8mm	
	6mm	Tube length:1m~10m available(no 3D measurement); 1m~5m available(X5 Pro, with 3D measurement)
	8mm	Tube length:1m~10m available



Depth of view	5-50mm/5-100mm/8-250mm*	
View angle	70°/80°/100°/120°*	
Camera pixels	16,000/30,000/1,000,000/2,000,000*	
Tube replacement	●	●
Lens replacement	○	○
View direction	Front view/side view	
Light source:Front LED	○	○
Light source: rear-mounted LED+fiber light guiding	○	○
360°all-way articulation	●	●
Electric probe steering control	●	●
Probe unidirectional bending angle	≥160°	
Bending speed	Fast/slow	
Probe lock/release	●	●
Probe housing material	Super hard alloy protection case	
Tube material	Tungsten wire wear-resistant braided tube	
Tube waterproof level	IP67	
<b>Power supply</b>		
Input Power	Input: 220±10%V 50Hz	
Output	Output: DC15V 6A	
Battery fast charge	Charging for 5 minutes can be used for half an hour; 50 minutes full	
Host battery capacity (non-removable)	Voltage: 7.4V, Capacity: ≥6000mAh	
Handle battery capacity (removable)	Voltage: 7.4V, Capacity: ≥5000mAh	
Continuous working time	≥ 8h	
<b>Operating environment</b>		
System operating temperature	-20°C~55°C	
Tip operating temperature	-20°C~85°C, -20°C~105°C (With temperature alarm)	
Storage temperature	-20°C~60°C	
Relative humidity	15%~90%	
<b>Accessories</b>		
Special instrument case	●	●
USB flash disk	●	●
Power adaptor	●	●
Pipe centralizer	○	○
Battery pack	○	○
Shoulder strap	○	○
Battery charger	●	●
HDMI cable	●	●
<b>Customization</b>		
Tube length, diameter, lighting mode can be customized	○	○
Tube can be added with a scale	○	○
Software customization	○	○
Display can be customized	○	○
Lens can be customized	○	○
*The specific parameters are subject to the actual product. Contact relevant personnel for confirmation.		



**WERTHEIM**  
SOLUTIONS