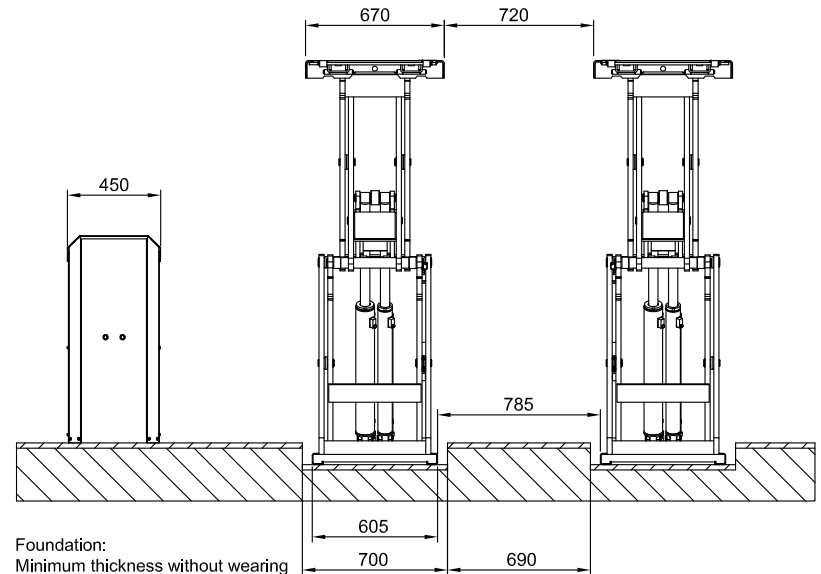
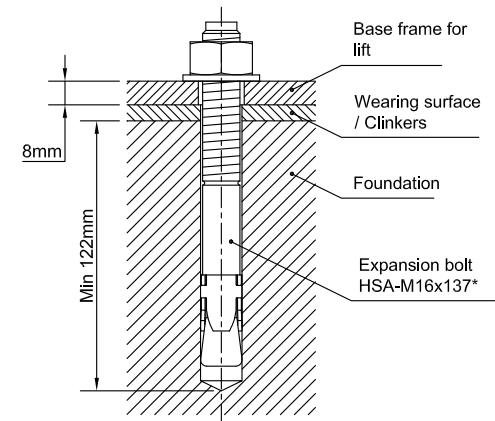
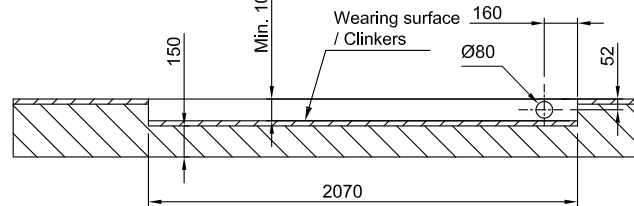
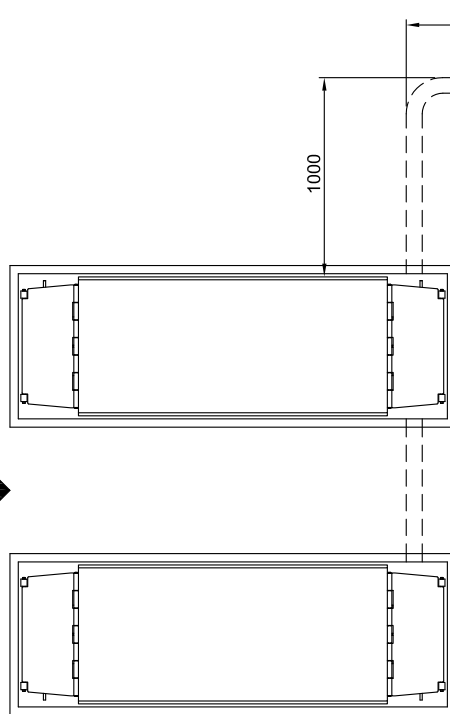


Surface pressure = 75kN/m<sup>2</sup> (pr. section)



Foundation:  
Minimum thickness without wearing surface: min. 150mm.  
Quality of concrete: C25/30 (EN206-1).



\*) If alternative attachment is used the properties of this attachment must correspond to the Hilti bolt mentioned.

Power supply:  
Power 230Vac/400Vac/3/50Hz  
+N, +PE, 16A slow, 2.2kW

Note !  
These instructions are considered as an addendum to the installation instructions of the lift.  
They are only to be used if the requirements to the floor indicated in the installation instructions cannot be respected.

Date: 150116

Sign. LJE

Scale: 1:25

Nr. T82306-GB

UPLIFTING COMPANY  
**AUTOP STENHOJ**

Foundation  
MagiX 30 I

Rev. date: